

Recessed Security Cabinet Installation Instructions

Recessed Security Cabinet Installation Instructions.

1. Recessed security cabinets are usually mounted so that the center of the door is 60" from the finished floor. Following the instructions contained on this sheet will place the cabinet at this height.

2. **New construction.** Frame the rough wall opening as shown in Figures 1 or 2. Continue installation with step 4.

3. **Existing construction.** Refer to Figures 3 and 4. Prepare the rough wall opening as follows.

(a) Determine the desired location for the cabinet.
 (b) Locate the wall studs. For ease of installation, the cabinet should be mounted between existing studs. If the studs interfere, new framing must be provided as shown in Figure 4.

(c) Layout the rough wall opening on the wall as shown in Figure 3 or 4. Cut out this opening, being careful not to damage the surrounding wall surface.

(d) The rough wall opening must be free of all obstructions. If a wall stud is protruding into the wall opening, this stud must be cut and removed.

Additional framing must be provided as shown in Figure 4. Be careful not to damage back of adjacent wall. If plumbing or electrical lines interfere with rough wall opening, they must be relocated. This must be done in accordance with the local and national codes and it is recommended that the services of a plumber or electrician be obtained.

5. Finish the surrounding wall.

6. Mounting the cabinet. Refer to Figure 5.

(a) Place the cabinet (with the door opening the desired direction) fully into the rough wall opening.

(b) Install four mounting screws (provided) as shown in Figure 5. Do not fully tighten these screws at this time.

(c) Place a carpenter's level on the cabinet. Tighten or loosen diagonally opposite screws as shown in Figure 5 to level the cabinet.

(d) When the cabinet is level, tighten all screws.

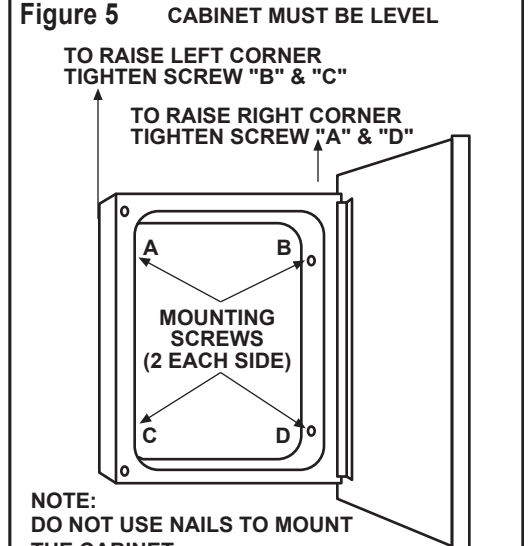
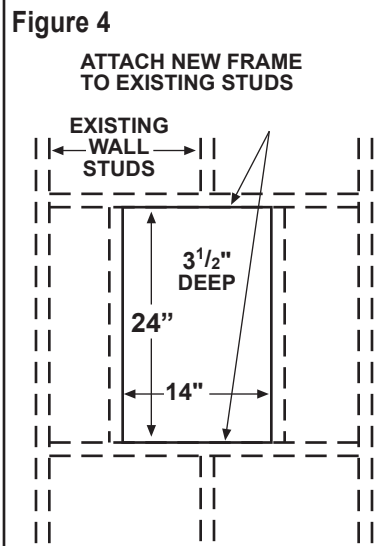
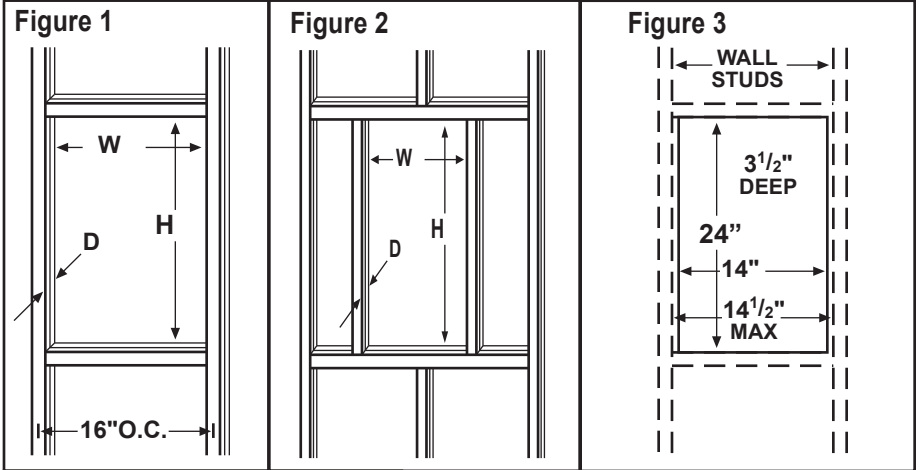
NOTE: DO NOT USE NAILS TO MOUNT THE CABINET.

7. Install the shelves in the desired location in the cabinet.

Notice:

This product is not a wall safe and is not intended to provide protection against fire or theft.

Model Number	Wall Opening			Overall Size	
	W	H	D	W	H
RSC1000N	14	24	3-1/2	15-7/8	25-3/4
RSC2000N	14	24	3-1/2	15-3/4	25-7/8
RSC3000N	14	16	3-1/2	15-7/8	18



ONE YEAR LIMITED WARRANTY

Broan-NuTone Storage Solutions warrants to the original consumer purchaser of its products that such products will be free from defects in materials or workmanship for a period of one (1) year from the date of original purchase. **THERE ARE NO OTHER WARRANTIES, EXPRESS OR IMPLIED, INCLUDING, BUT NOT LIMITED TO, IMPLIED WARRANTIES OF MERCHANTABILITY OR FITNESS FOR A PARTICULAR PURPOSE.**

During this one year period, Broan-NuTone Storage Solutions will, at its option, repair or replace, without charge, any product or part which is found to be defective under normal use and service. This warranty does not cover (a) normal maintenance and service or (b) any products or parts which have been subject to misuse, negligence, accident, improper maintenance or repair (other than by Broan-NuTone Storage Solutions), faulty installation or installation contrary to recommended installation instructions. Labor to remove and replace products is not covered. The duration of any implied warranty is limited to the one year period as specified for the express warranty. Some states do not allow limitation on how long an implied warranty lasts, so the above limitation may not apply to you.

BROAN-NUTONE STORAGE SOLUTIONS' OBLIGATION TO REPAIR OR REPLACE, AT BROAN-NUTONE STORAGE SOLUTIONS' OPTION, SHALL BE THE PURCHASER'S SOLE AND EXCLUSIVE REMEDY UNDER THIS WARRANTY. BROAN-NUTONE STORAGE SOLUTIONS SHALL NOT BE LIABLE FOR INCIDENTAL, CONSEQUENTIAL OR SPECIAL DAMAGES ARISING OUT OF OR IN CONNECTION WITH PRODUCT USE OR PERFORMANCE. Some states do not allow the exclusion or limitation of incidental or consequential damages, so the above limitation or exclusion may not apply to you. This warranty gives you specific legal rights, and you may also have other rights, which vary from state to state. This warranty supersedes all prior warranties.

Date of Installation _____

Model No. and Product Description _____